

APPENDIX

C MAPPING





LEGEND

— Proposed Route

TITLE:

FIGURE 1: STUDY AREA

SCALE:
1:40,000

PROJECT NO:
161-07859-01

DATE:
AUGUST 2019

DRAWN BY:
AST

CLIENT:
REGION OF WATERLOO

PROJECT:

CULTURAL HERITAGE REPORT: EXISTING
CONDITIONS AND PRELIMINARY IMPACT
ASSESSMENT REPORT WATERLOO ION STAGE 2 TPAP

CREDITS:

0 1,000 2,000 m





LEGEND

— Proposed Route



TITLE: FIGURE 2: HISTORIC MAPPING (1861)	SCALE: 1:50,000	PROJECT NO: 161-07859-01	DATE: AUGUST 2019
PROJECT: CULTURAL HERITAGE REPORT: EXISTING CONDITIONS AND PRELIMINARY IMPACT ASSESSMENT REPORT WATERLOO ION STAGE 2 TPAP	DRAWN BY: AST	CLIENT: REGION OF WATERLOO	CREDITS: TREMINE'S MAP OF THE COUNTY OF WATERLOO, CANADA WEST (1861)



LEGEND

— Proposed Route

TITLE:

FIGURE 3: HISTORIC MAPPING (1881)

SCALE:
1:50,000

PROJECT NO:
161-07859-01

DATE:
AUGUST 2019

DRAWN BY:
AST

CLIENT:
REGION OF WATERLOO

PROJECT:

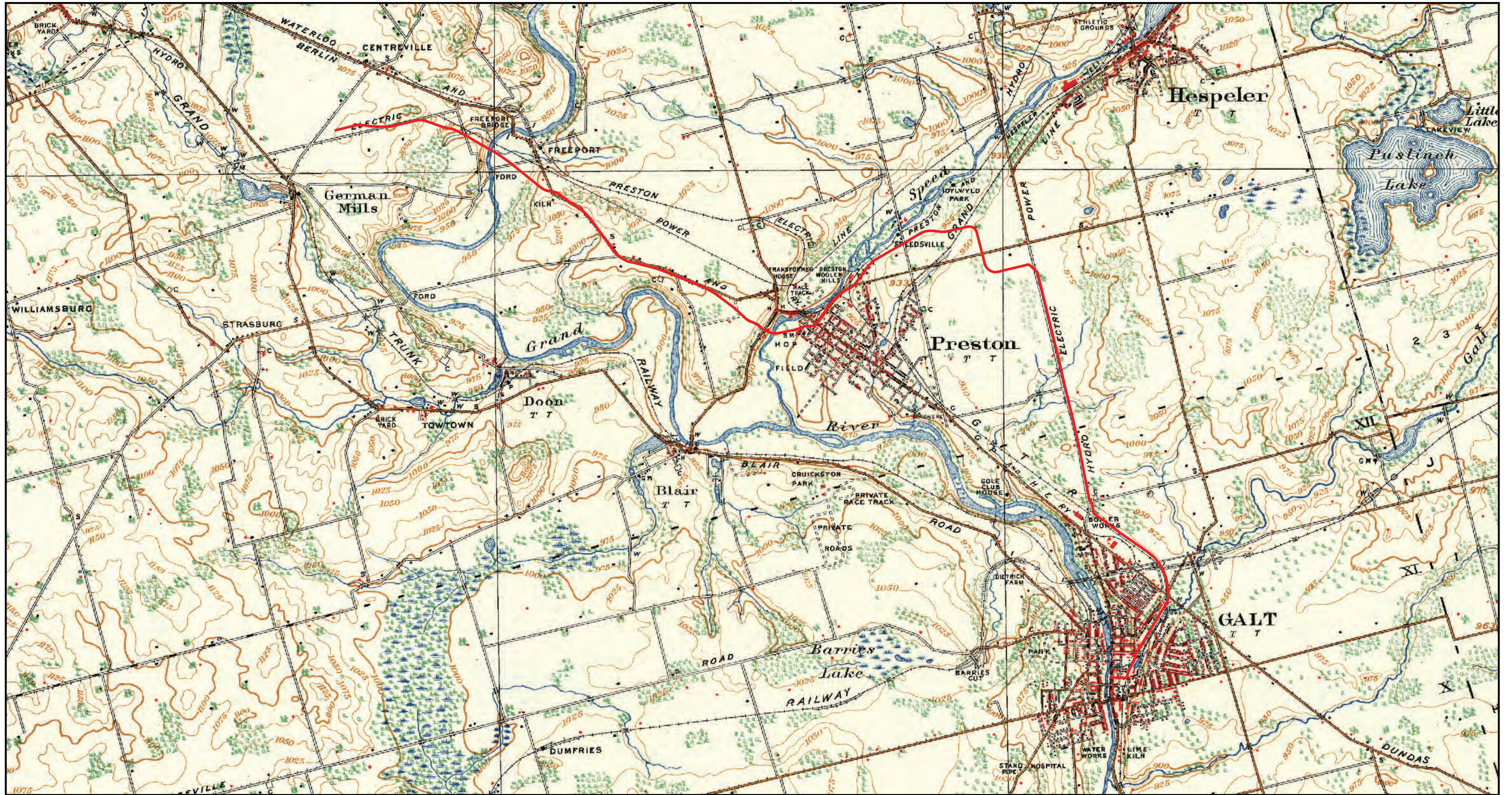
CULTURAL HERITAGE REPORT: EXISTING
CONDITIONS AND PRELIMINARY IMPACT
ASSESSMENT REPORT WATERLOO ION STAGE 2 TPAP

CREDITS:

TOWNSHIPS OF WATERLOO
AND DUMFRIES FROM
ILLUSTRATED ATLAS OF THE
COUNTY OF WATERLOO
(H. PARSELL & CO., 1881)

0 1,000 2,000 m





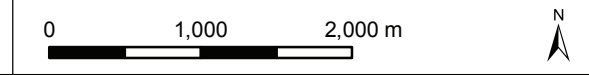
LEGEND
 — Proposed Route

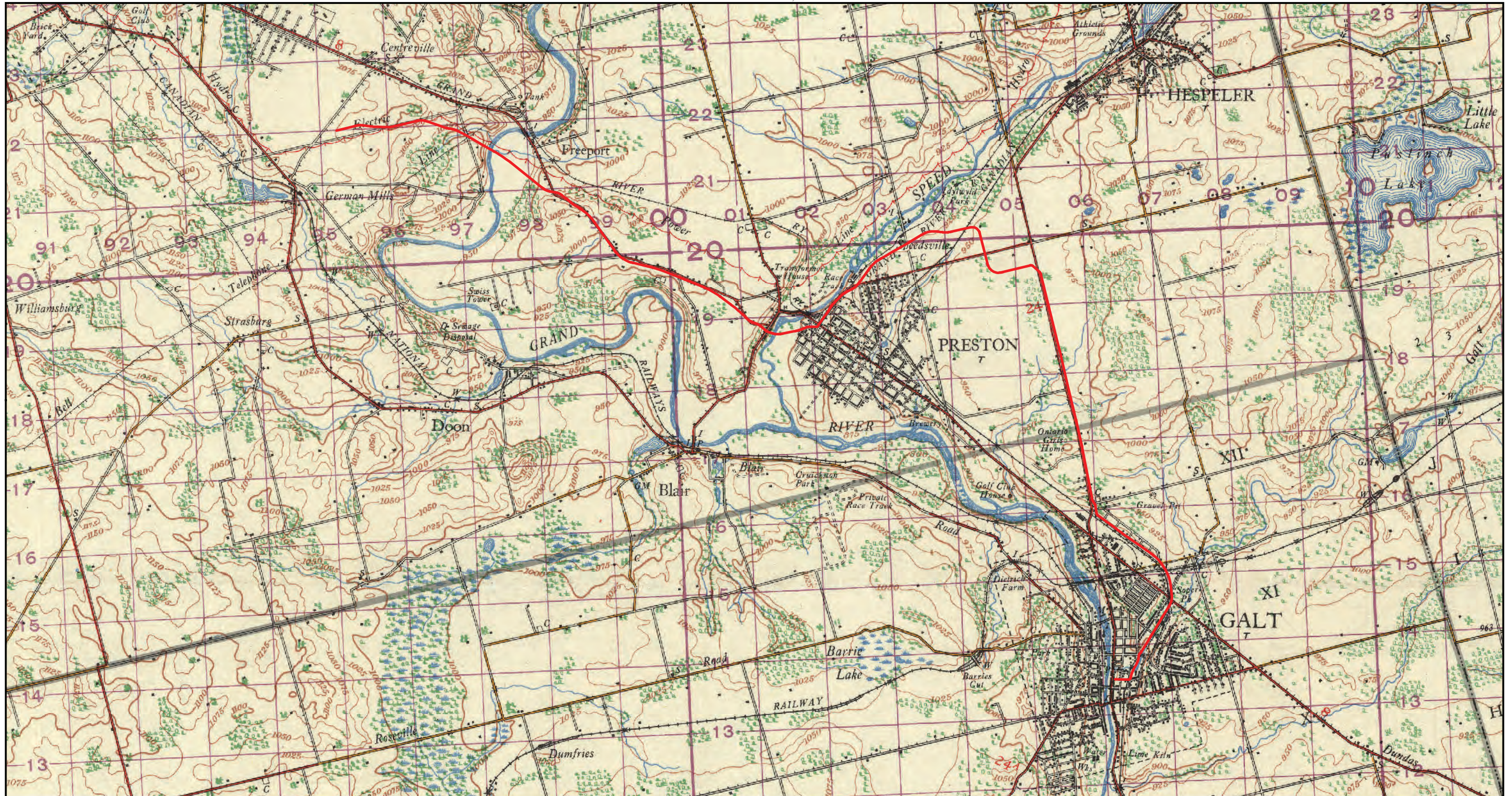
TITLE:
 FIGURE 4: 1923 TOPOGRAPHIC MAP, GALT SHEET

SCALE: 1:50,000	PROJECT NO: 161-07859-01	DATE: MARCH 2019
DRAWN BY: AST	CLIENT: REGION OF WATERLOO	

PROJECT:
 CULTURAL HERITAGE REPORT: EXISTING
 CONDITIONS AND PRELIMINARY IMPACT
 ASSESSMENT REPORT WATERLOO ION STAGE 2 TPAP

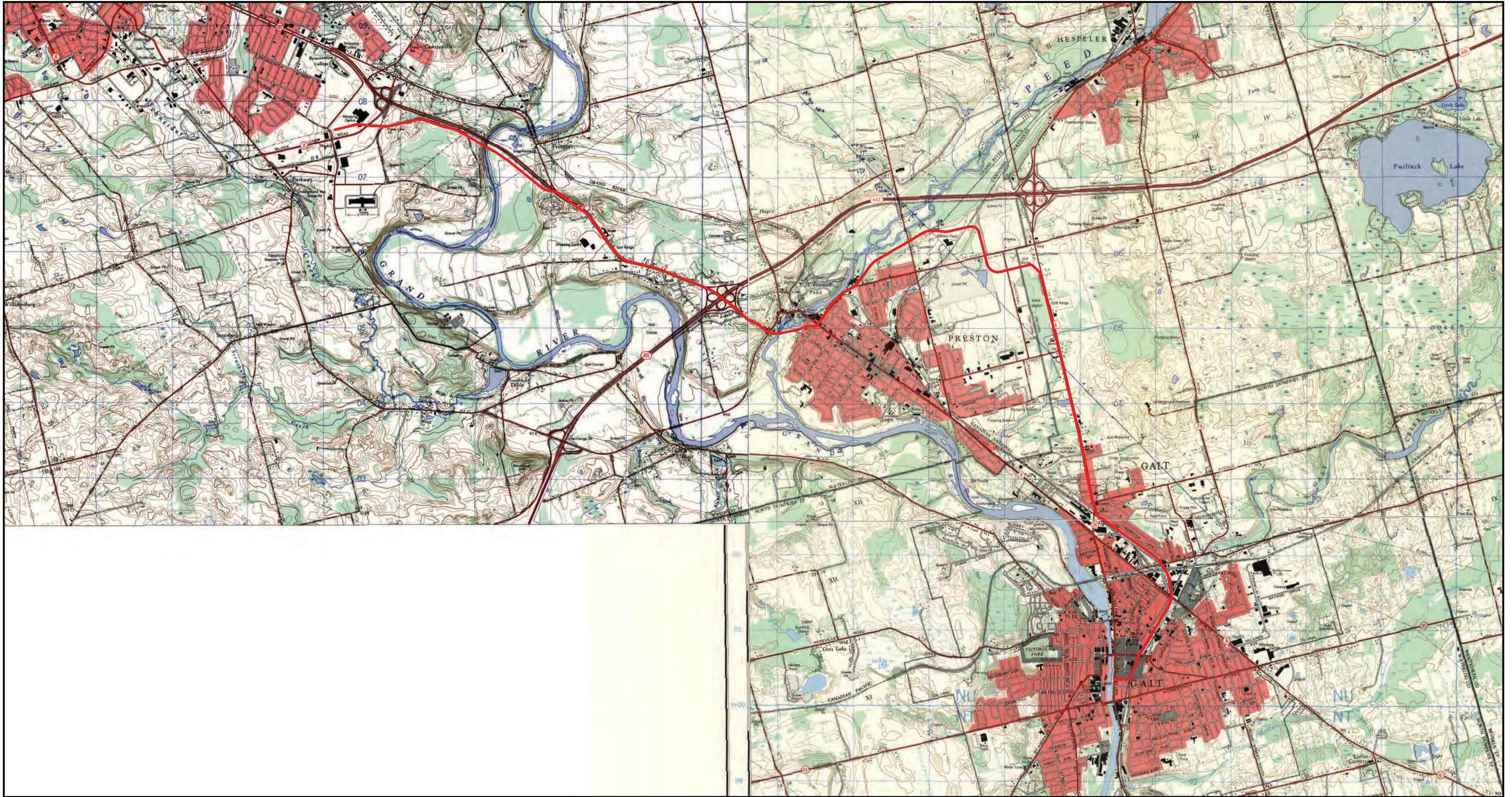
CREDITS:
 DEPARTMENT OF MILITIA AND
 DEFENCE 1923, SHEET 040P08
 ONTARIO COUNCIL OF UNIVERSITY
 LIBRARIES





LEGEND
 — Proposed Route

TITLE: FIGURE 5: 1938 TOPOGRAPHIC MAP, GALT SHEET	SCALE: 1:50,000	PROJECT NO: 161-07859-01	DATE: AUGUST 2019
PROJECT: CULTURAL HERITAGE REPORT: EXISTING CONDITIONS AND PRELIMINARY IMPACT ASSESSMENT REPORT WATERLOO ION STAGE 2 TPAP	DRAWN BY: AST	CLIENT: REGION OF WATERLOO	CREDITS: DEPARTMENT OF MILITIA AND DEFENCE 1938, SHEET 040P08 ONTARIO COUNCIL OF UNIVERSITY LIBRARIES
0 1,000 2,000 m		N	



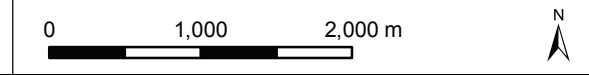
LEGEND
 — Proposed Route

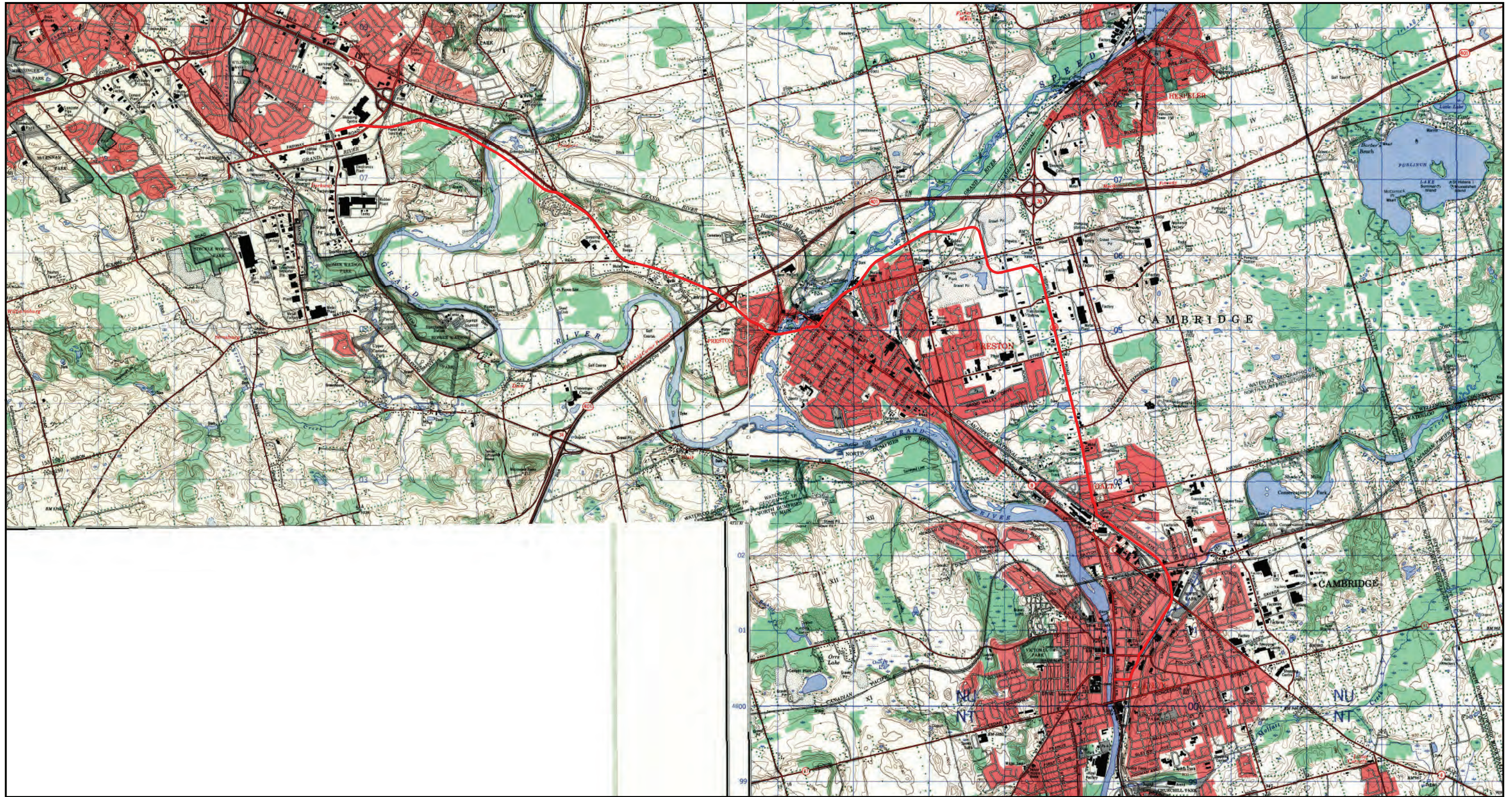
TITLE: FIGURE 6: 1968 TOPOGRAPHIC MAP, KITCHENER EAST/GALT/PRESTON-HESPELER

SCALE: 1:50,000	PROJECT NO: 161-07859-01	DATE: AUGUST 2019
DRAWN BY: AST	CLIENT: REGION OF WATERLOO	

PROJECT:
 CULTURAL HERITAGE REPORT: EXISTING CONDITIONS AND PRELIMINARY IMPACT ASSESSMENT REPORT WATERLOO ION STAGE 2 TPAP

CREDITS:
 DEPARTMENT OF ENERGY, MINES AND RESOURCES, 1968, SHEETS 040P08C, 040P08E, AND 040P08F
 ONTARIO COUNCIL OF UNIVERSITY LIBRARIES





LEGEND
 — Proposed Route

TITLE:
 FIGURE 7: 1975/1976 TOPOGRAPHIC MAP,
 KITCHENER EAST/GALT/PRESTON-HESPELER

SCALE: 1:50,000	PROJECT NO: 161-07859-01	DATE: AUGUST 2019
DRAWN BY: AST	CLIENT: REGION OF WATERLOO	

PROJECT:
 CULTURAL HERITAGE REPORT: EXISTING
 CONDITIONS AND PRELIMINARY IMPACT
 ASSESSMENT REPORT WATERLOO ION STAGE 2 TPAP

CREDITS:
 DEPARTMENT OF ENERGY, MINES
 AND RESOURCES, 1975, SHEETS
 040P08C, 040P08F, AND 1976 SHEET
 040P08E ONTARIO COUNCIL OF
 UNIVERSITY LIBRARIES





LEGEND

— Preliminary Design Plan **Cultural Heritage Resources**

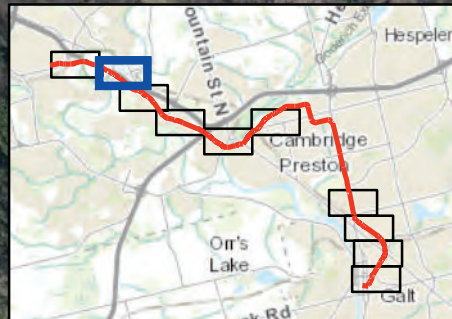
- Candidate
- Federally Designated
- Inventoried
- Municipally Designated
- Municipally Listed

TITLE:
FIGURE 8: PROPERTIES WITH KNOWN AND POTENTIAL CULTURAL HERITAGE VALUE

PROJECT:
CULTURAL HERITAGE REPORT: EXISTING CONDITIONS AND PRELIMINARY IMPACT ASSESSMENT REPORT WATERLOO ION STAGE 2 TPAP

0 100 200 m

SCALE: 1:4,000	PROJECT NO: 161-07859-01	DATE: AUGUST 2019
DRAWN BY: AST	CLIENT: REGION OF WATERLOO	
CREDITS: LAND INFORMATION ONTARIO		

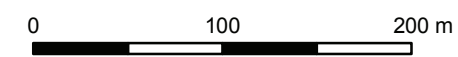


LEGEND

- Preliminary Design Plan
- Cultural Heritage Resources**
 - Candidate
 - Federally Designated
 - Inventoried
 - Municipally Designated
 - Municipally Listed

TITLE:
FIGURE 9: PROPERTIES WITH KNOWN AND POTENTIAL CULTURAL HERITAGE VALUE

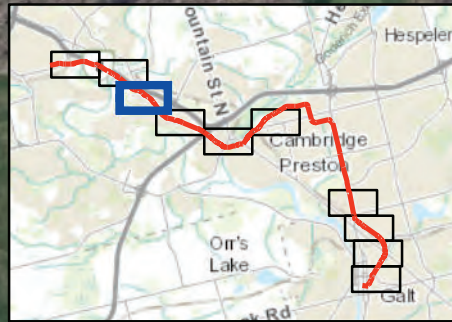
PROJECT:
CULTURAL HERITAGE REPORT: EXISTING CONDITIONS AND PRELIMINARY IMPACT ASSESSMENT REPORT WATERLOO ION STAGE 2 TPAP



SCALE: 1:4,000
PROJECT NO: 161-07859-01
DATE: AUGUST 2019

DRAWN BY: AST
CLIENT: REGION OF WATERLOO

CREDITS:
LAND INFORMATION ONTARIO

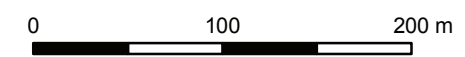


LEGEND

- Preliminary Design Plan
- Cultural Heritage Resources**
 - Candidate
 - Federally Designated
 - Inventoried
 - Municipally Designated
 - Municipally Listed

TITLE: FIGURE 10: PROPERTIES WITH KNOWN AND POTENTIAL CULTURAL HERITAGE VALUE

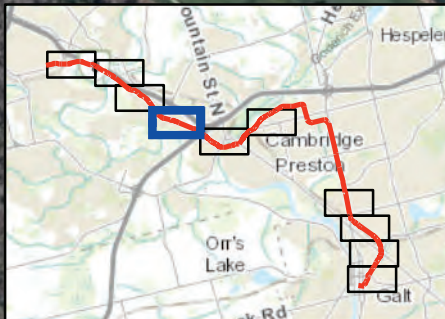
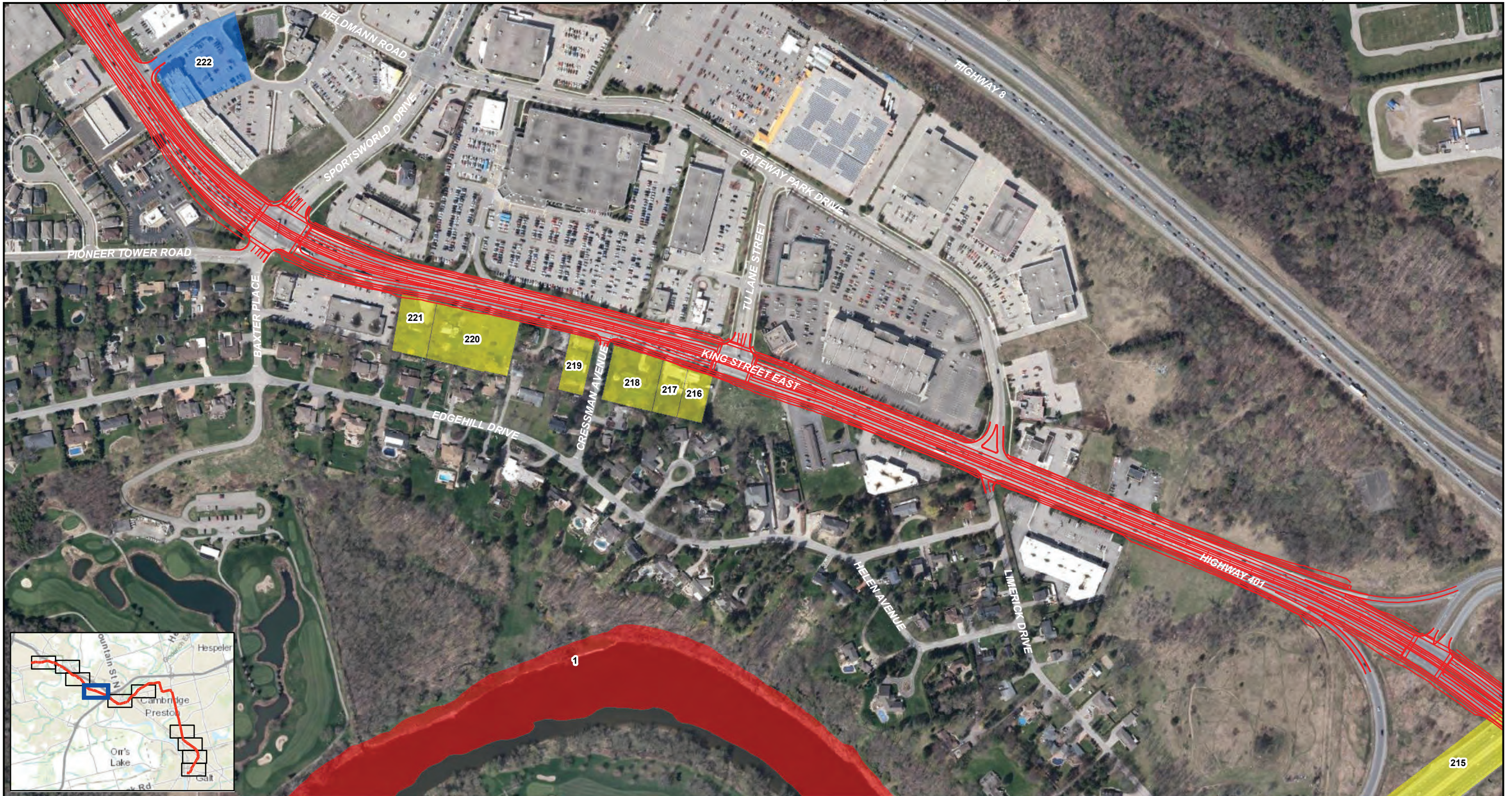
PROJECT: CULTURAL HERITAGE REPORT: EXISTING CONDITIONS AND PRELIMINARY IMPACT ASSESSMENT REPORT WATERLOO ION STAGE 2 TPAP



SCALE: 1:4,000 PROJECT NO: 161-07859-01 DATE: AUGUST 2019

DRAWN BY: AST CLIENT: REGION OF WATERLOO

CREDITS: LAND INFORMATION ONTARIO

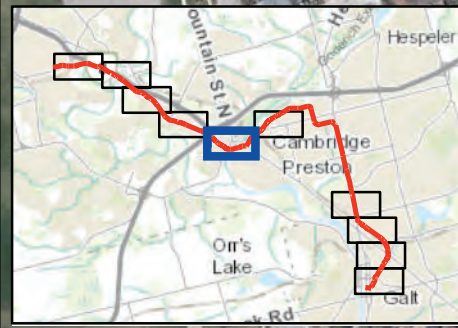


LEGEND

- Preliminary Design Plan
- Candidate
- Federally Designated
- Inventoried
- Municipally Designated
- Municipally Listed

Cultural Heritage Resources

TITLE: FIGURE 11: PROPERTIES WITH KNOWN AND POTENTIAL CULTURAL HERITAGE VALUE	SCALE: 1:4,000	PROJECT NO: 161-07859-01	DATE: AUGUST 2019
	DRAWN BY: AST	CLIENT: REGION OF WATERLOO	
PROJECT: CULTURAL HERITAGE REPORT: EXISTING CONDITIONS AND PRELIMINARY IMPACT ASSESSMENT REPORT WATERLOO ION STAGE 2 TPAP	CREDITS: LAND INFORMATION ONTARIO		
0 100 200 m <div style="text-align: right;"> N </div>			



LEGEND

- Preliminary Design Plan
- Cultural Heritage Resources**
 - Candidate
 - Federally Designated
 - Inventoried
 - Municipally Designated
 - Municipally Listed

TITLE: FIGURE 12: PROPERTIES WITH KNOWN AND POTENTIAL CULTURAL HERITAGE VALUE

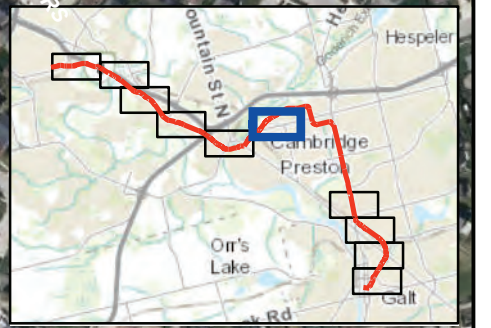
SCALE: 1:4,000 PROJECT NO: 161-07859-01 DATE: AUGUST 2019

PROJECT: CULTURAL HERITAGE REPORT: EXISTING CONDITIONS AND PRELIMINARY IMPACT ASSESSMENT REPORT WATERLOO ION STAGE 2 TPAP

DRAWN BY: AST CLIENT: REGION OF WATERLOO

CREDITS: LAND INFORMATION ONTARIO





LEGEND

- Preliminary Design Plan **Cultural Heritage Resources**
- Candidate
- Federally Designated
- Inventoried
- Municipally Designated
- Municipally Listed

TITLE: FIGURE 13: PROPERTIES WITH KNOWN AND POTENTIAL CULTURAL HERITAGE VALUE

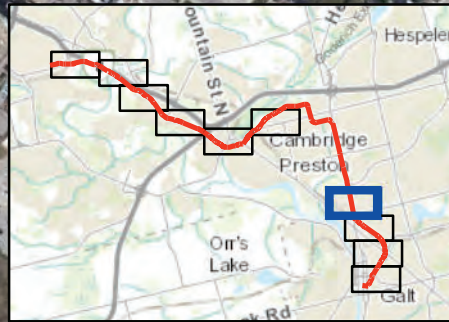
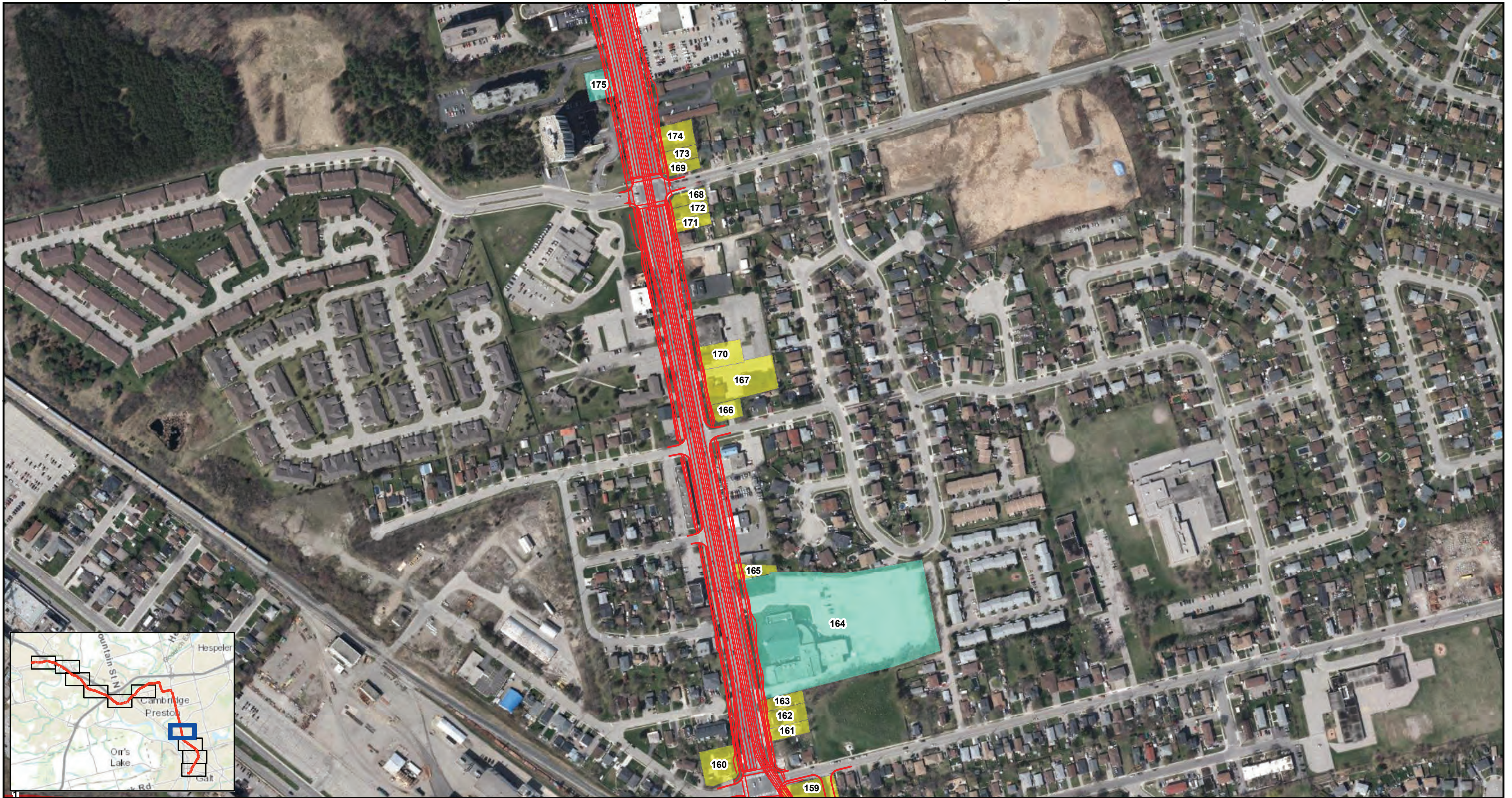
PROJECT: CULTURAL HERITAGE REPORT: EXISTING CONDITIONS AND PRELIMINARY IMPACT ASSESSMENT REPORT WATERLOO ION STAGE 2 TPAP

SCALE: 1:4,000 PROJECT NO: 161-07859-01 DATE: AUGUST 2019

DRAWN BY: AST CLIENT: REGION OF WATERLOO

CREDITS: LAND INFORMATION ONTARIO





LEGEND

— Preliminary Design Plan **Cultural Heritage Resources**

- Candidate
- Federally Designated
- Inventoried
- Municipally Designated
- Municipally Listed

TITLE:
FIGURE 14: PROPERTIES WITH KNOWN AND POTENTIAL CULTURAL HERITAGE VALUE

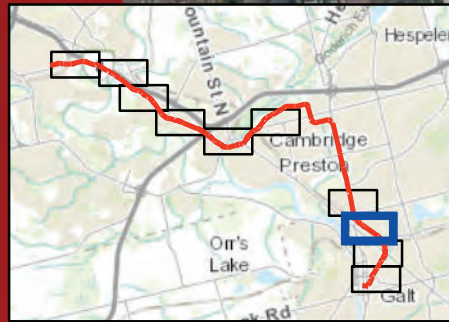
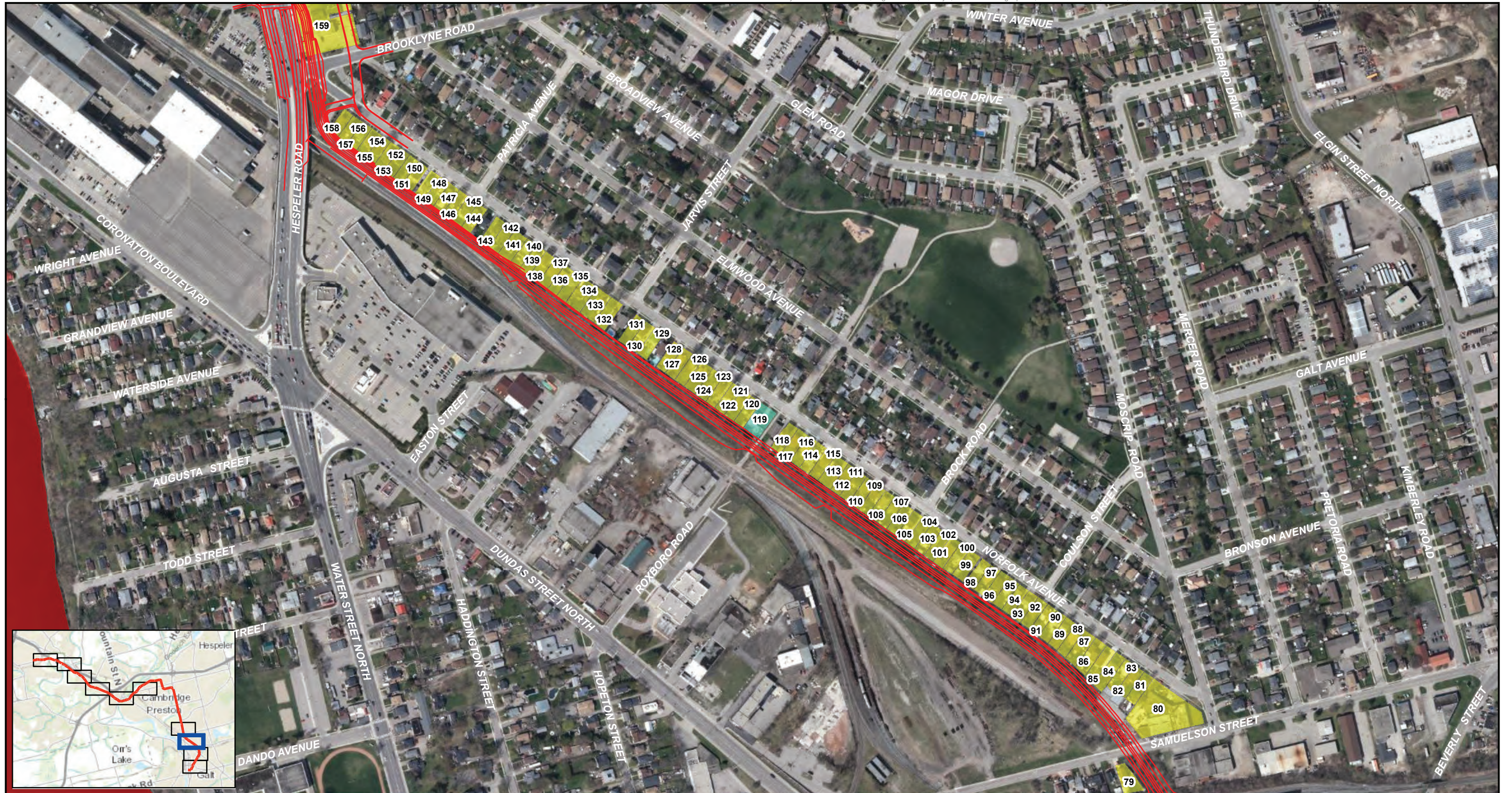
PROJECT:
CULTURAL HERITAGE REPORT: EXISTING CONDITIONS AND PRELIMINARY IMPACT ASSESSMENT REPORT WATERLOO ION STAGE 2 TPAP



SCALE: 1:4,000	PROJECT NO: 161-07859-01	DATE: AUGUST 2019
DRAWN BY: AST	CLIENT: REGION OF WATERLOO	

CREDITS:

LAND INFORMATION ONTARIO



LEGEND

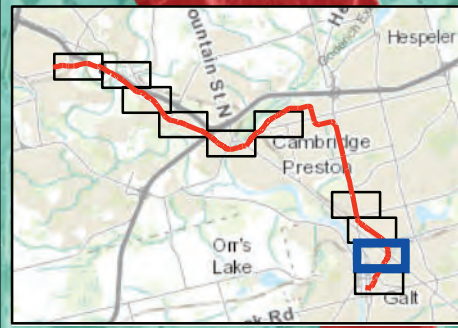
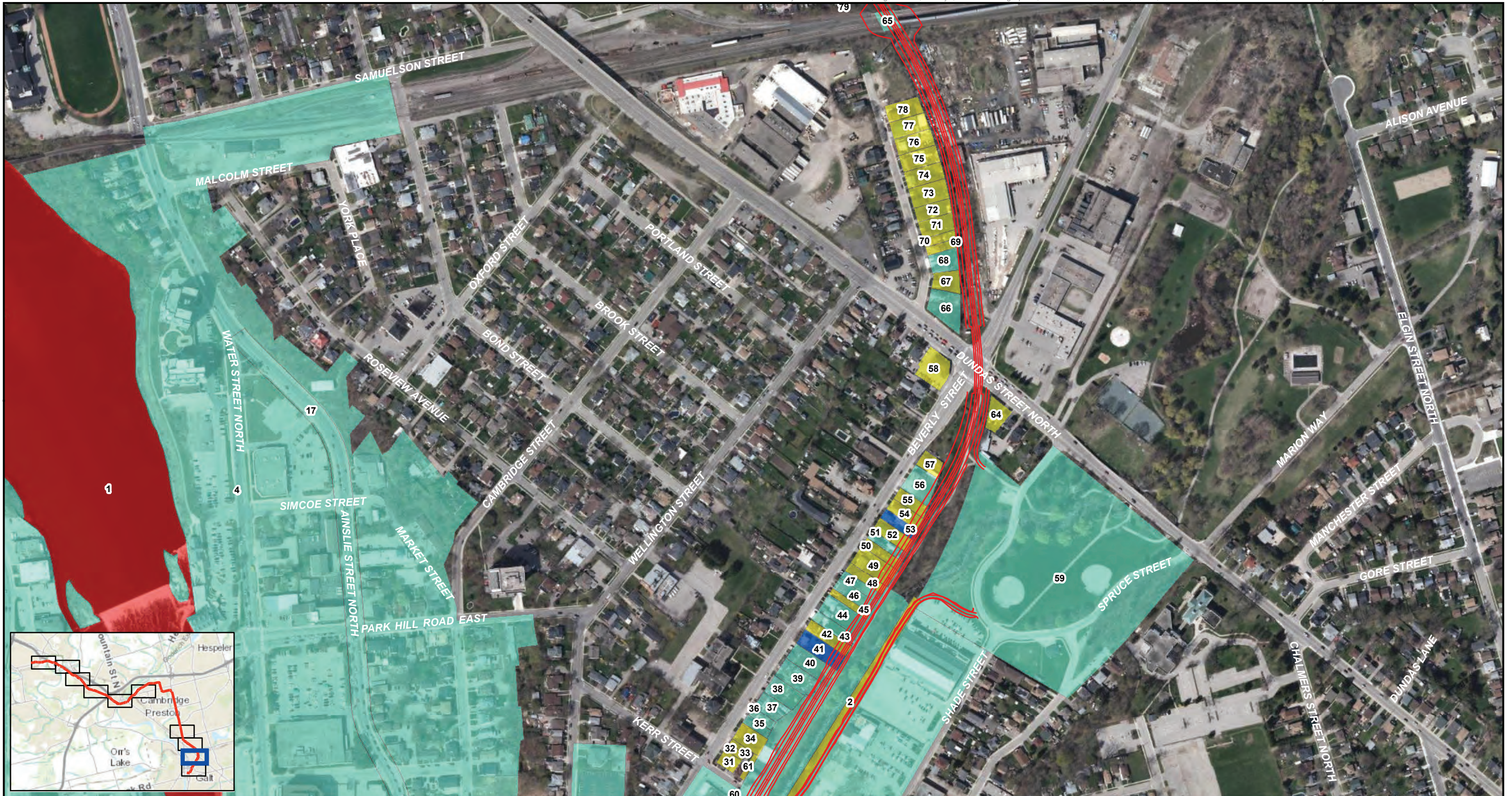
- Preliminary Design Plan
- Candidate
- Federally Designated
- Inventoried
- Municipally Designated
- Municipally Listed

TITLE: FIGURE 15: PROPERTIES WITH KNOWN AND POTENTIAL CULTURAL HERITAGE VALUE

PROJECT: CULTURAL HERITAGE REPORT: EXISTING CONDITIONS AND PRELIMINARY IMPACT ASSESSMENT REPORT WATERLOO ION STAGE 2 TPAP

0 100 200 m

SCALE: 1:4,000	PROJECT NO: 161-07859-01	DATE: AUGUST 2019
DRAWN BY: AST	CLIENT: REGION OF WATERLOO	
CREDITS: LAND INFORMATION ONTARIO		



LEGEND

- Preliminary Design Plan
 - Candidate
 - Federally Designated
 - Inventoried
 - Municipally Designated
 - Municipally Listed
- Cultural Heritage Resources**



TITLE: FIGURE 16: PROPERTIES WITH KNOWN AND POTENTIAL CULTURAL HERITAGE VALUE

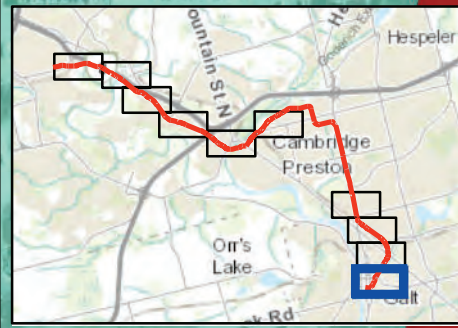
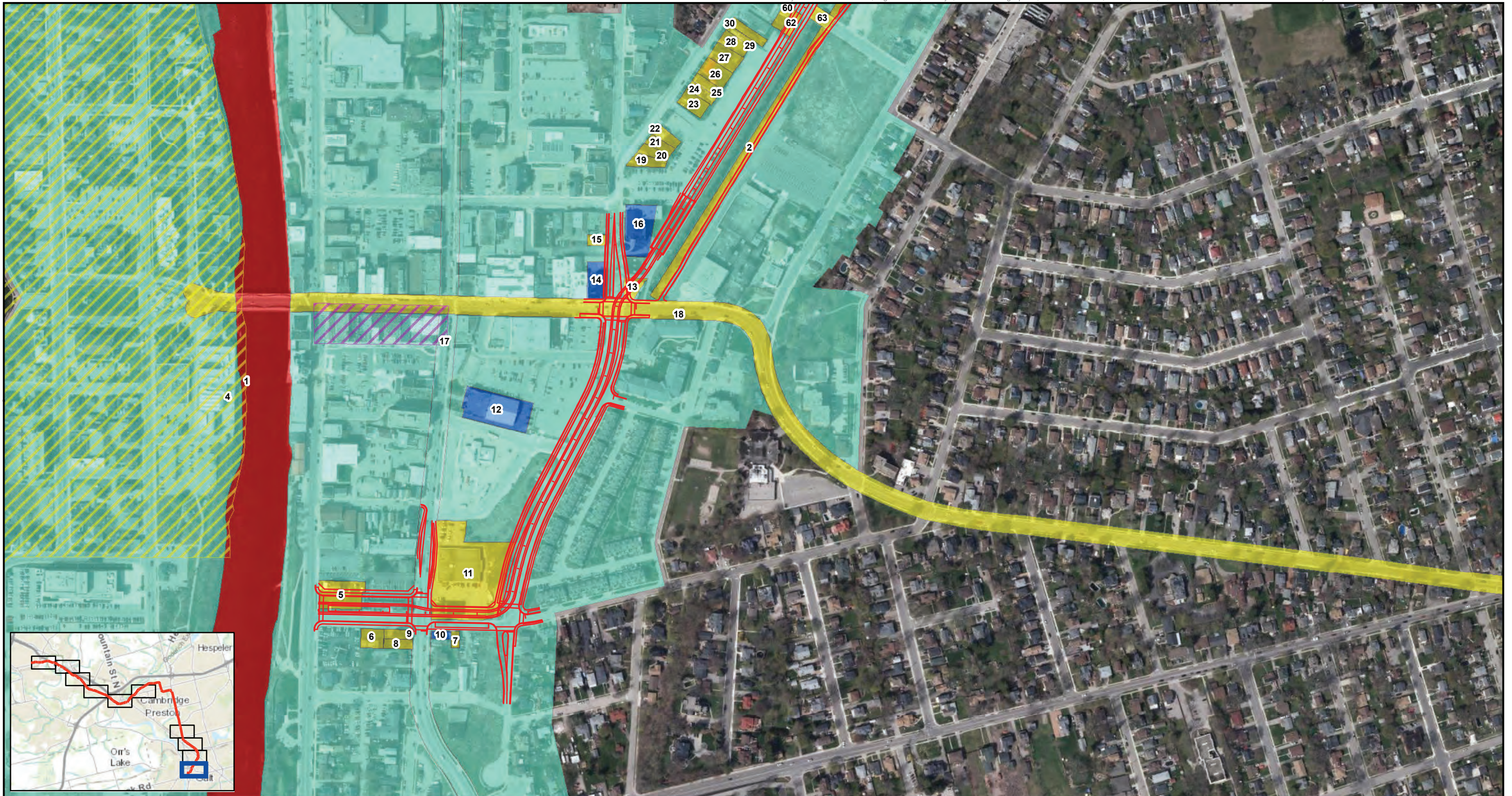
SCALE: 1:4,000 PROJECT NO: 161-07859-01 DATE: AUGUST 2019

PROJECT: CULTURAL HERITAGE REPORT: EXISTING CONDITIONS AND PRELIMINARY IMPACT ASSESSMENT REPORT WATERLOO ION STAGE 2 TPAP

DRAWN BY: AST CLIENT: REGION OF WATERLOO

CREDITS: LAND INFORMATION ONTARIO





LEGEND

- Preliminary Design Plan
 - Dickson Hill Heritage Conservation District
 - Main Street Heritage Conservation District
- Cultural Heritage Resources**
- Candidate
 - Federally Designated
 - Inventoried
 - Municipally Designated
 - Municipally Listed

TITLE: FIGURE 17: PROPERTIES WITH KNOWN AND POTENTIAL CULTURAL HERITAGE VALUE

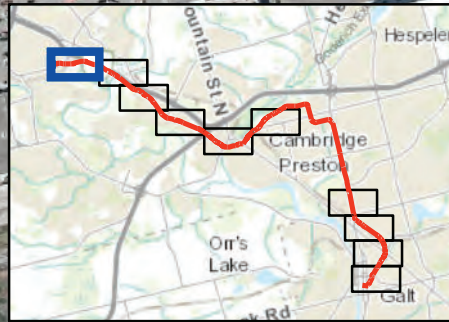
SCALE: 1:4,000 PROJECT NO: 161-07859-01 DATE: AUGUST 2019

PROJECT: CULTURAL HERITAGE REPORT: EXISTING CONDITIONS AND PRELIMINARY IMPACT ASSESSMENT REPORT WATERLOO ION STAGE 2 TPAP

DRAWN BY: AST CLIENT: REGION OF WATERLOO

CREDITS: LAND INFORMATION ONTARIO

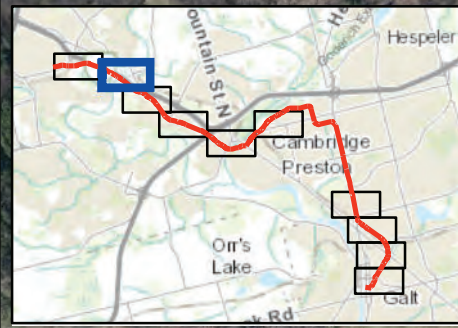




LEGEND

- Preliminary Design Plan
- Anticipated Impacts**
- Direct Impacts - Alteration
- Direct Impacts - Demolition
- Direct Impacts - Landscape
- Direct and Indirect impacts - Landscape
- No impacts anticipated at this time.

TITLE: FIGURE 18: PRELIMINARY IMPACT ASSESSMENTS	SCALE: 1:4,000	PROJECT NO: 161-07859-01	DATE: JANUARY 2020
PROJECT: CULTURAL HERITAGE REPORT: EXISTING CONDITIONS AND PRELIMINARY IMPACT ASSESSMENT REPORT WATERLOO ION STAGE 2 TPAP	DRAWN BY: AST	CLIENT: REGION OF WATERLOO	CREDITS: LAND INFORMATION ONTARIO
<p>0 100 200 m</p>			



LEGEND

- Preliminary Design Plan
- Anticipated Impacts
 - Direct Impacts - Alteration
 - Direct Impacts - Demolition
 - Direct Impacts - Landscape
 - Direct and Indirect impacts - Landscape
 - No impacts anticipated at this time.



TITLE:
FIGURE 19: PRELIMINARY IMPACT ASSESSMENTS

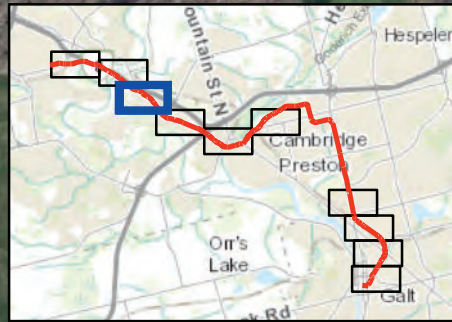
SCALE: 1:4,000	PROJECT NO: 161-07859-01	DATE: JANUARY 2020
DRAWN BY: AST		CLIENT: REGION OF WATERLOO

PROJECT:
CULTURAL HERITAGE REPORT: EXISTING
CONDITIONS AND PRELIMINARY IMPACT
ASSESSMENT REPORT WATERLOO ION STAGE 2 TPAP

CREDITS:

LAND INFORMATION ONTARIO





LEGEND

- Preliminary Design Plan
- Anticipated Impacts**
- Direct Impacts - Alteration
- Direct Impacts - Demolition
- Direct Impacts - Landscape
- Direct and Indirect impacts - Landscape
- No impacts anticipated at this time.

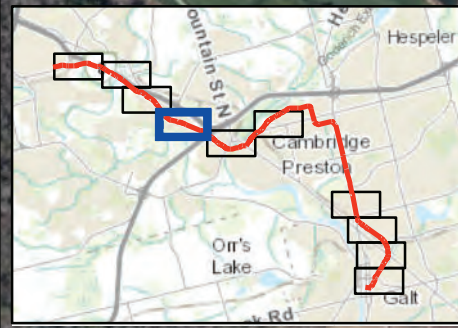
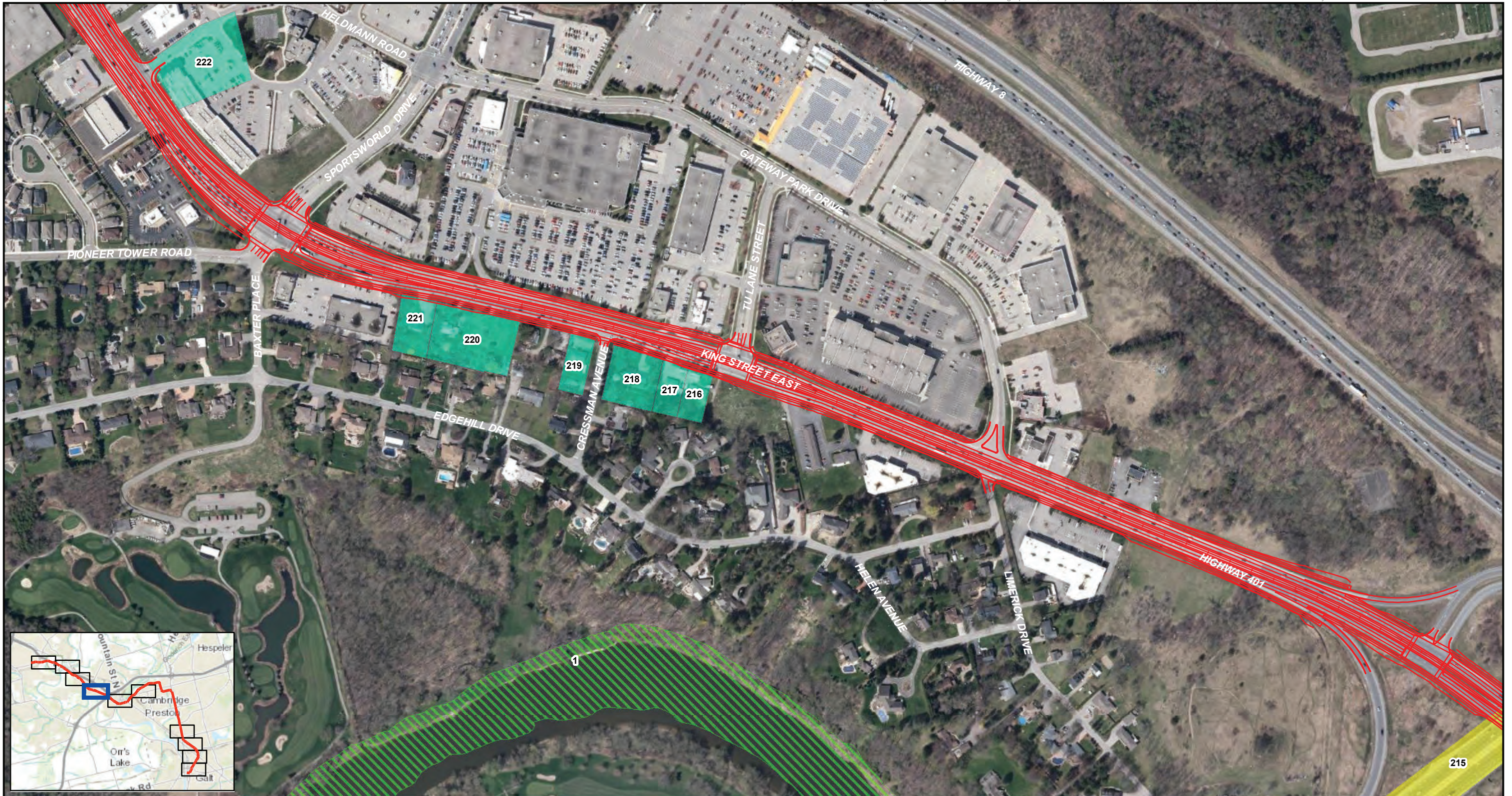
TITLE:
FIGURE 20: PRELIMINARY IMPACT ASSESSMENTS

SCALE: 1:4,000	PROJECT NO: 161-07859-01	DATE: JANUARY 2020
DRAWN BY: AST		CLIENT: REGION OF WATERLOO

PROJECT:
CULTURAL HERITAGE REPORT: EXISTING
CONDITIONS AND PRELIMINARY IMPACT
ASSESSMENT REPORT WATERLOO ION STAGE 2 TPAP

CREDITS:
LAND INFORMATION ONTARIO

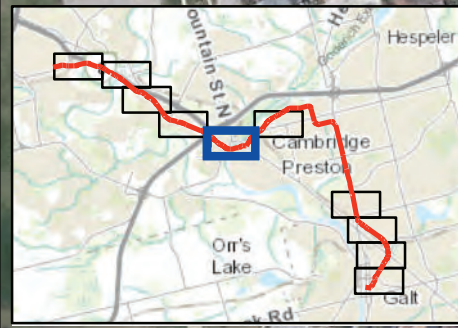




LEGEND

- Preliminary Design Plan
- Direct Impacts - Alteration
- Direct Impacts - Demolition
- Anticipated Impacts**
- Direct Impacts - Landscape
- Direct and Indirect impacts - Landscape
- No impacts anticipated at this time.

TITLE: FIGURE 21: PRELIMINARY IMPACT ASSESSMENTS	SCALE: 1:4,000	PROJECT NO: 161-07859-01	DATE: JANUARY 2020
PROJECT: CULTURAL HERITAGE REPORT: EXISTING CONDITIONS AND PRELIMINARY IMPACT ASSESSMENT REPORT WATERLOO ION STAGE 2 TPAP	DRAWN BY: AST		
CREDITS: LAND INFORMATION ONTARIO		CLIENT: REGION OF WATERLOO	
0 100 200 m			

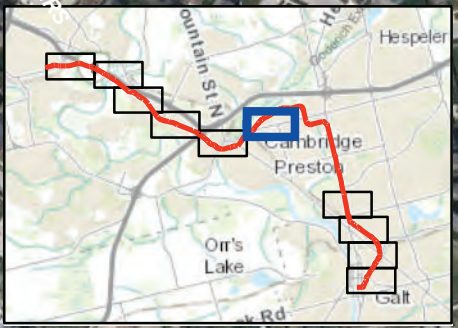


LEGEND

- Preliminary Design Plan
- Direct Impacts - Alteration
- Direct Impacts - Demolition
- Direct Impacts - Landscape
- Direct and Indirect impacts - Landscape
- No impacts anticipated at this time.



TITLE: FIGURE 22: PRELIMINARY IMPACT ASSESSMENTS	SCALE: 1:4,000	PROJECT NO: 161-07859-01	DATE: JANUARY 2020
PROJECT: CULTURAL HERITAGE REPORT: EXISTING CONDITIONS AND PRELIMINARY IMPACT ASSESSMENT REPORT WATERLOO ION STAGE 2 TPAP	DRAWN BY: AST		CLIENT: REGION OF WATERLOO
0 100 200 m		N	
CREDITS:			LAND INFORMATION ONTARIO



LEGEND

- Preliminary Design Plan
- Direct Impacts - Alteration
- Direct Impacts - Demolition
- Direct Impacts - Landscape
- Direct and Indirect impacts - Landscape
- No impacts anticipated at this time.

TITLE:
FIGURE 23: PRELIMINARY IMPACT ASSESSMENTS

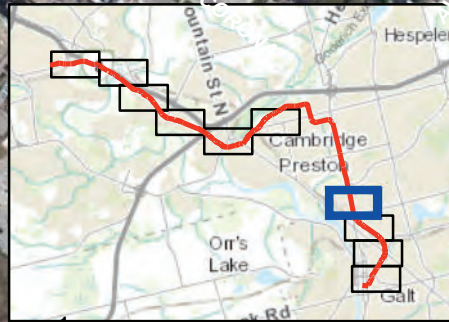
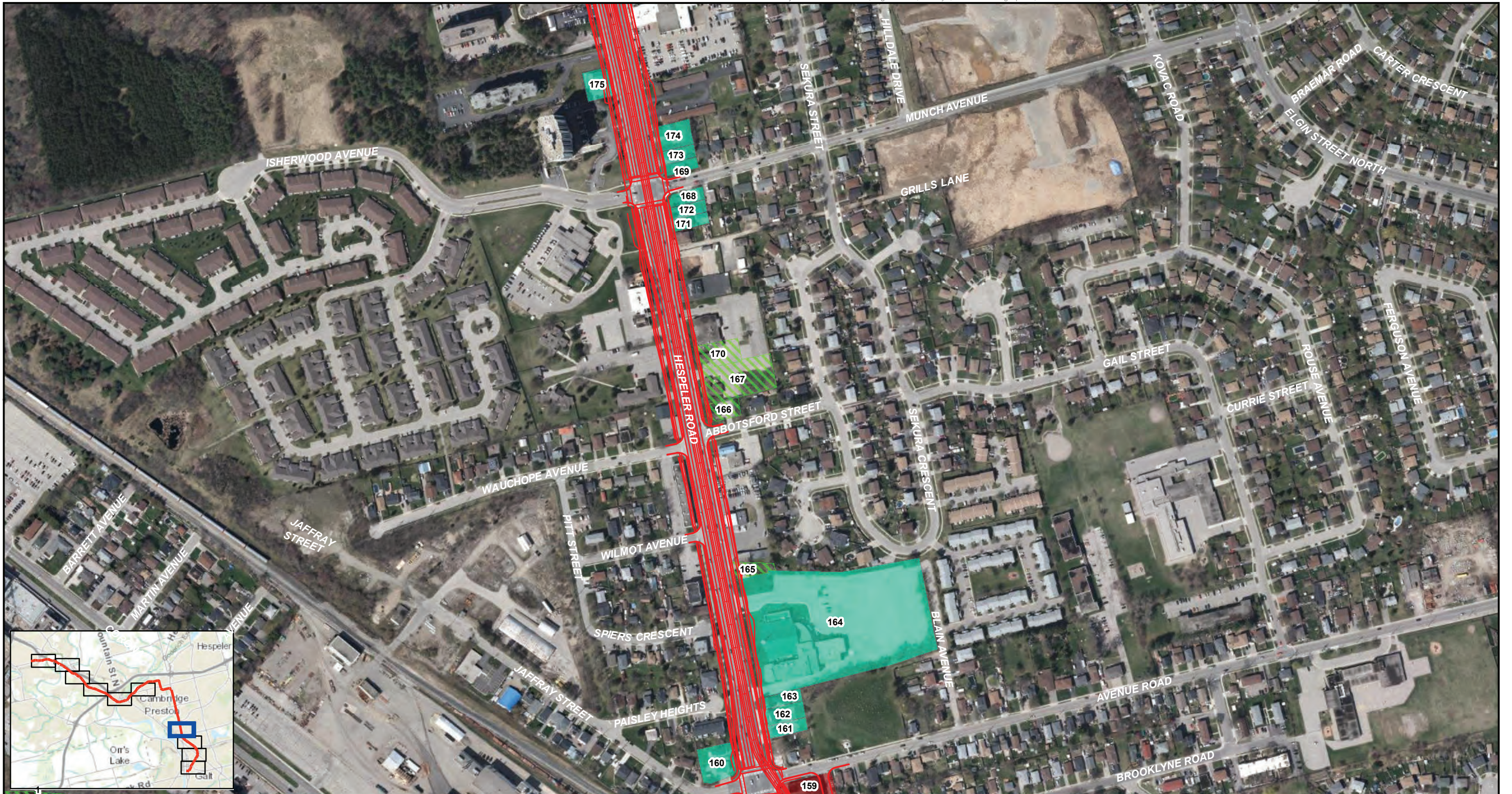
SCALE: 1:4,000	PROJECT NO: 161-07859-01	DATE: JANUARY 2020
DRAWN BY: AST	CLIENT: REGION OF WATERLOO	

PROJECT:
CULTURAL HERITAGE REPORT: EXISTING
CONDITIONS AND PRELIMINARY IMPACT
ASSESSMENT REPORT WATERLOO ION STAGE 2 TPAP

CREDITS:

LAND INFORMATION ONTARIO



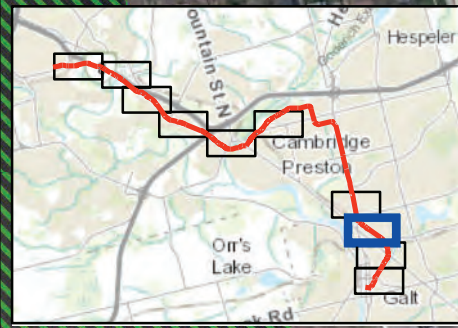
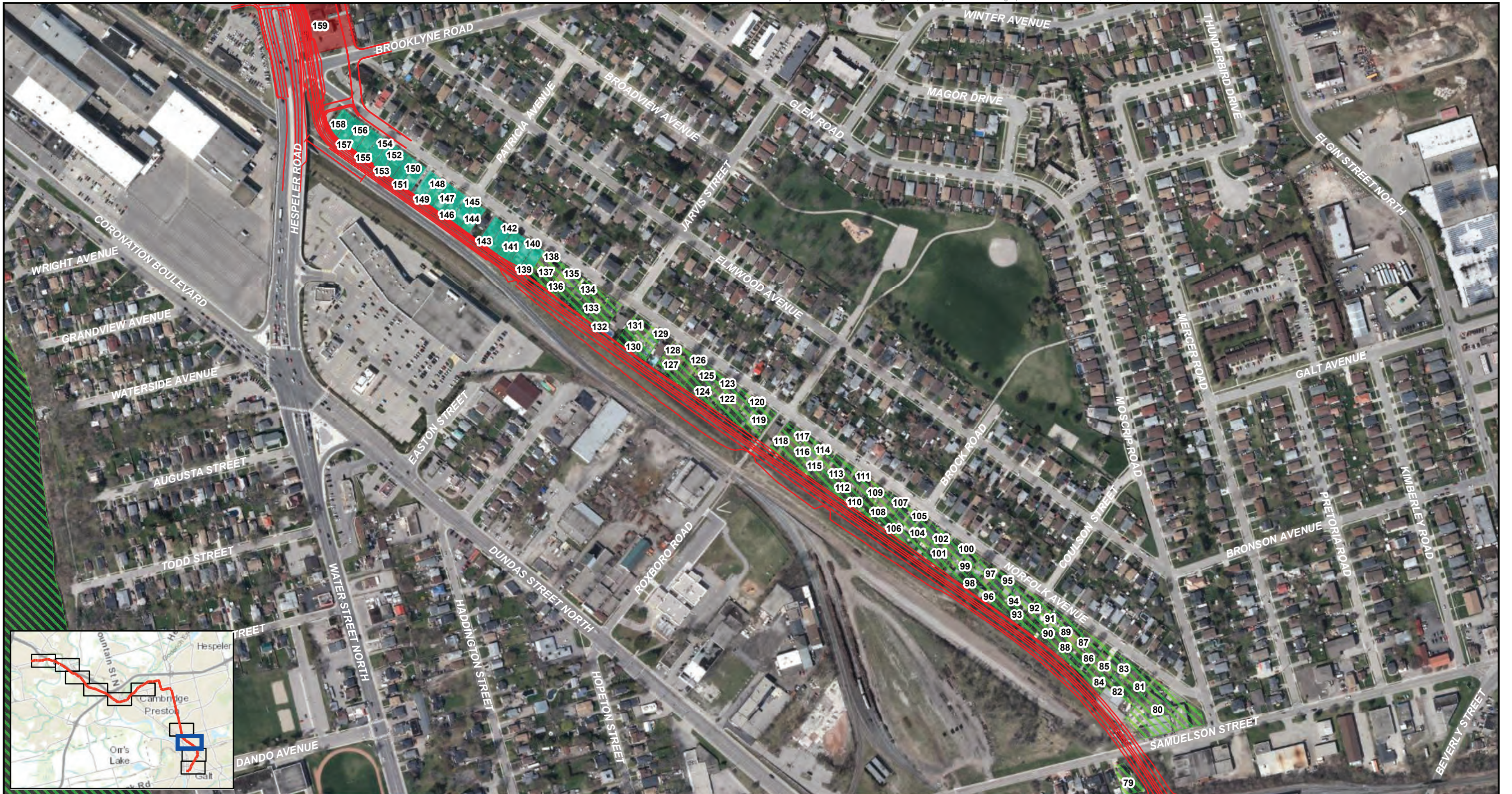


LEGEND

- Preliminary Design Plan
- Direct Impacts - Alteration
- Direct Impacts - Demolition
- Direct Impacts - Landscape
- Direct and Indirect impacts - Landscape
- No impacts anticipated at this time.



<p>TITLE: FIGURE 24: PRELIMINARY IMPACT ASSESSMENTS</p> <p>PROJECT: CULTURAL HERITAGE REPORT: EXISTING CONDITIONS AND PRELIMINARY IMPACT ASSESSMENT REPORT WATERLOO ION STAGE 2 TPAP</p>	<p>SCALE: 1:4,000</p> <p>DRAWN BY: AST</p>	<p>PROJECT NO: 161-07859-01</p> <p>CLIENT: REGION OF WATERLOO</p>	<p>DATE: JANUARY 2020</p>
<p>0 100 200 m</p>		<p>LAND INFORMATION ONTARIO</p>	



LEGEND

- Preliminary Design Plan
- Direct Impacts - Alteration
- Direct Impacts - Demolition
- Direct Impacts - Landscape
- Direct and Indirect impacts - Landscape
- No impacts anticipated at this time.



TITLE:
FIGURE 25: PRELIMINARY IMPACT ASSESSMENTS

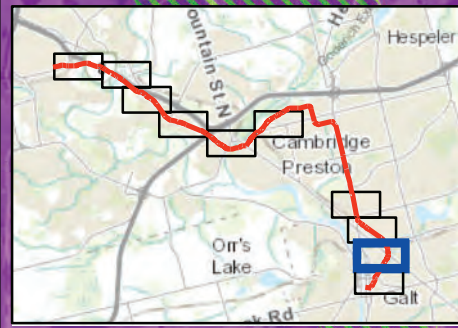
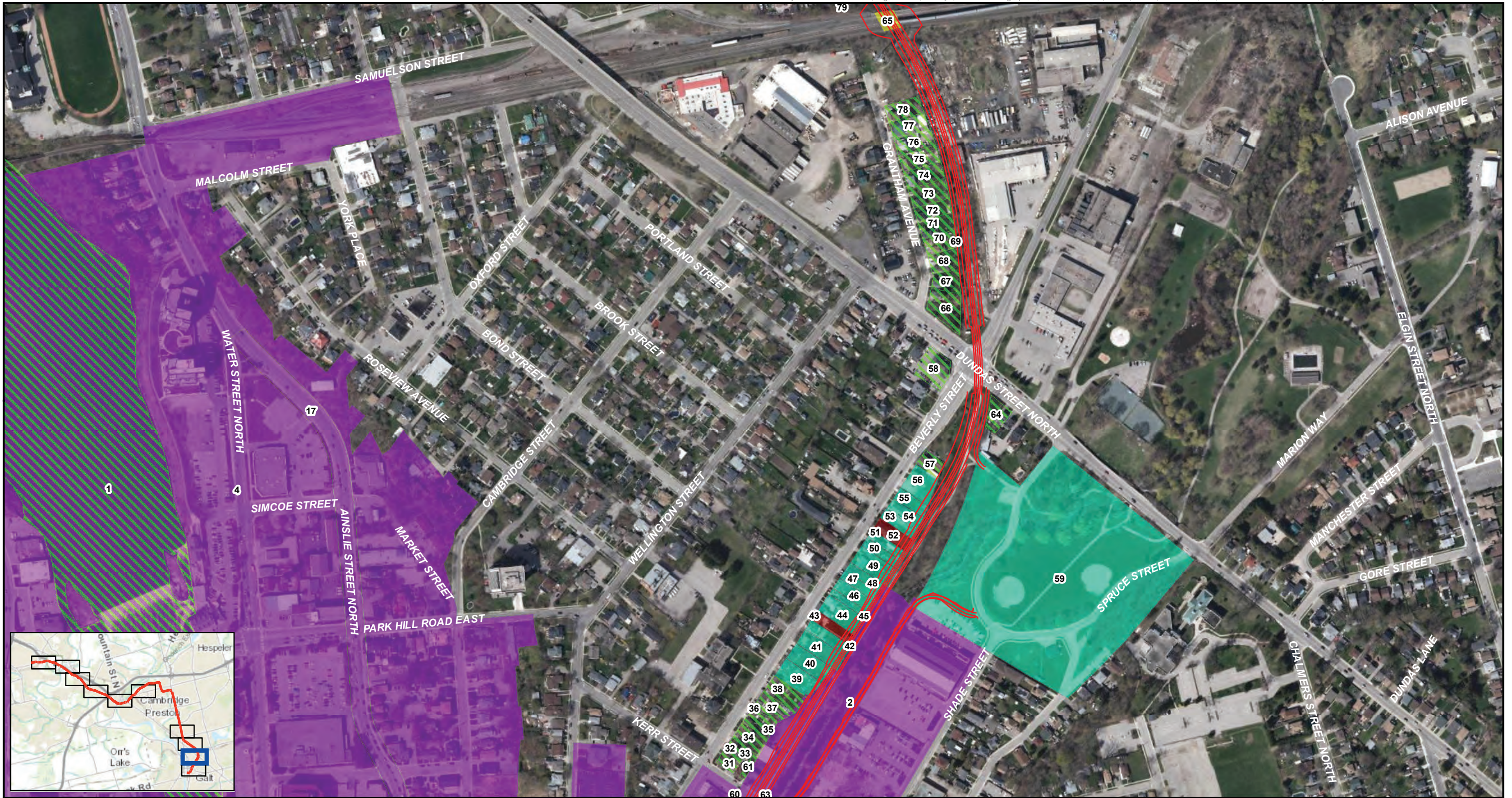
SCALE: 1:4,000	PROJECT NO: 161-07859-01	DATE: JANUARY 2020
DRAWN BY: AST		CLIENT: REGION OF WATERLOO

PROJECT:
CULTURAL HERITAGE REPORT: EXISTING
CONDITIONS AND PRELIMINARY IMPACT
ASSESSMENT REPORT WATERLOO ION STAGE 2 TPAP

CREDITS:

LAND INFORMATION ONTARIO



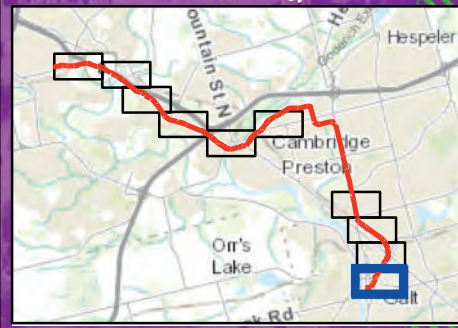
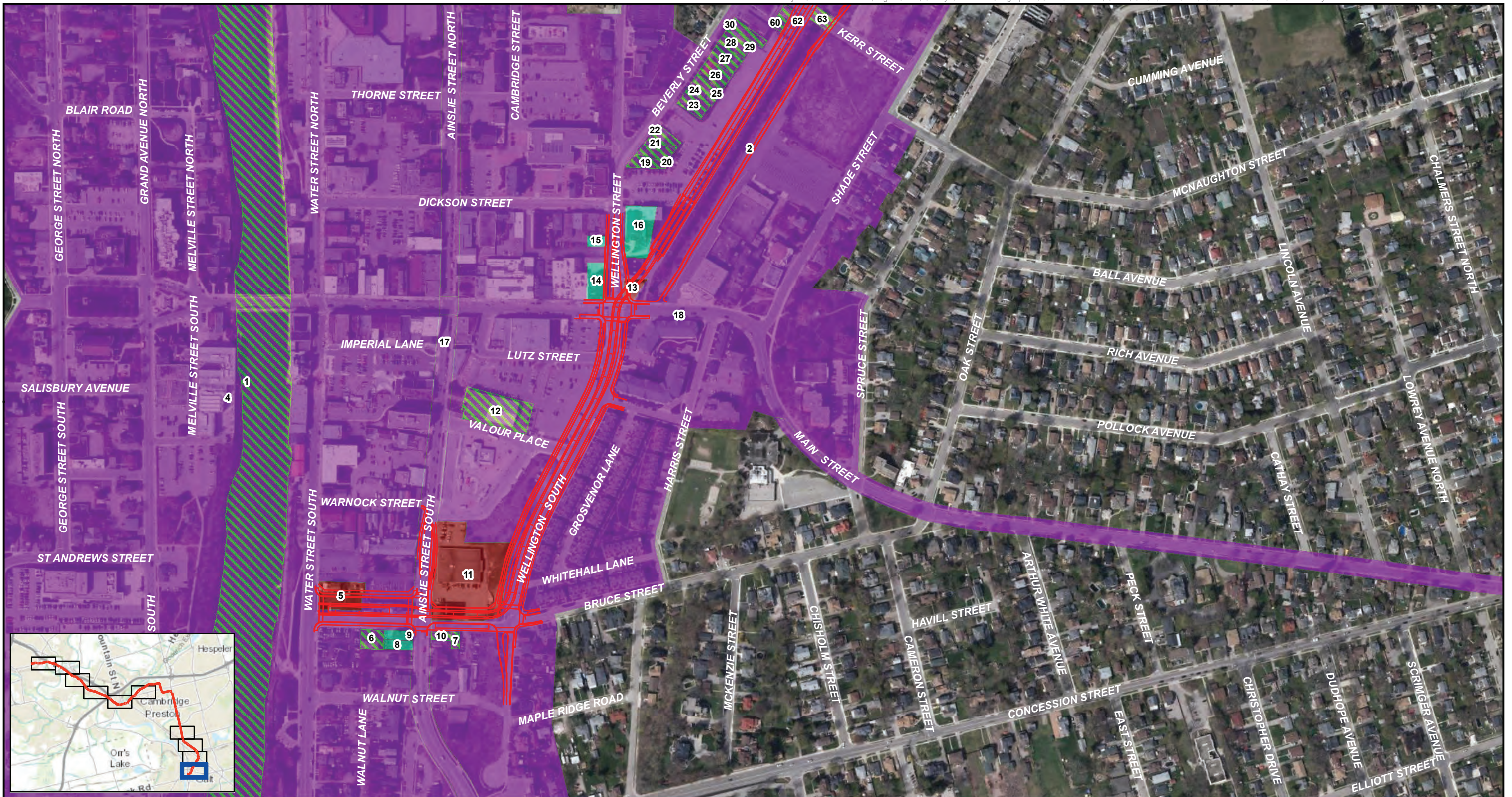


LEGEND

- Preliminary Design Plan
- Direct Impacts - Alteration
- Direct Impacts - Demolition
- Direct Impacts - Landscape
- Direct and Indirect impacts - Landscape
- No impacts anticipated at this time.



<p>TITLE: FIGURE 26: PRELIMINARY IMPACT ASSESSMENTS</p> <p>PROJECT: CULTURAL HERITAGE REPORT: EXISTING CONDITIONS AND PRELIMINARY IMPACT ASSESSMENT REPORT WATERLOO ION STAGE 2 TPAP</p>	<p>SCALE: 1:4,000</p> <p>DRAWN BY: AST</p>	<p>PROJECT NO: 161-07859-01</p> <p>CLIENT: REGION OF WATERLOO</p>	<p>DATE: JANUARY 2020</p>
<p>0 100 200 m</p>		<p>LAND INFORMATION ONTARIO</p>	



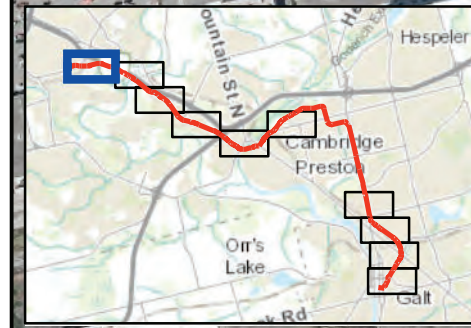
LEGEND

- Preliminary Design Plan
- Direct Impacts - Alteration
- Direct Impacts - Demolition
- Direct Impacts - Landscape
- Direct and Indirect impacts - Landscape
- No impacts anticipated at this time.



TITLE: FIGURE 27: PRELIMINARY IMPACT ASSESSMENTS	SCALE: 1:4,000	PROJECT NO: 161-07859-01	DATE: JANUARY 2020
PROJECT: CULTURAL HERITAGE REPORT: EXISTING CONDITIONS AND PRELIMINARY IMPACT ASSESSMENT REPORT WATERLOO ION STAGE 2 TPAP	DRAWN BY: AST	CLIENT: REGION OF WATERLOO	
CREDITS: LAND INFORMATION ONTARIO			





LEGEND

— Preliminary Design Plan Recommendation

- Heritage Documentation Report
- Post-TPAP CHER
- Post-TPAP CHER/HIA
- Post-TPAP HIA
- TPAP CHER

TITLE:
FIGURE 28: RECOMMENDATIONS

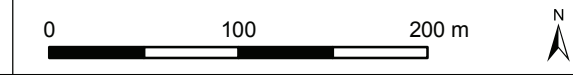
SCALE: 1:4,000	PROJECT NO: 161-07859-01	DATE: AUGUST 2019
-------------------	-----------------------------	----------------------

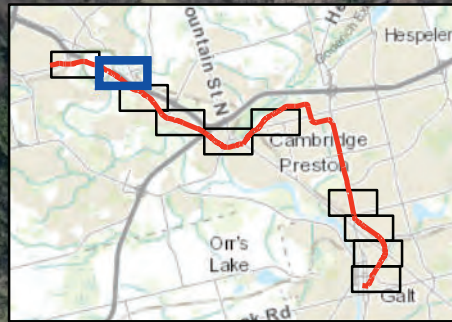
DRAWN BY:
AST

CLIENT: REGION OF WATERLOO

PROJECT:
CULTURAL HERITAGE REPORT: EXISTING
CONDITIONS AND PRELIMINARY IMPACT
ASSESSMENT REPORT WATERLOO ION STAGE 2 TPAP

CREDITS:
LAND INFORMATION ONTARIO



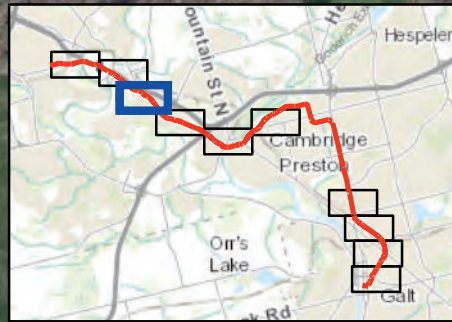


LEGEND

- Preliminary Design Plan **Recommendation**
- Heritage Documentation Report
- Post-TPAP CHER
- Post-TPAP CHER/HIA
- Post-TPAP HIA
- TPAP CHER

TITLE: FIGURE 29: RECOMMENDATIONS	SCALE: 1:4,000	PROJECT NO: 161-07859-01	DATE: AUGUST 2019
PROJECT: CULTURAL HERITAGE REPORT: EXISTING CONDITIONS AND PRELIMINARY IMPACT ASSESSMENT REPORT WATERLOO ION STAGE 2 TPAP	DRAWN BY: AST	CLIENT: REGION OF WATERLOO	
CREDITS: LAND INFORMATION ONTARIO			



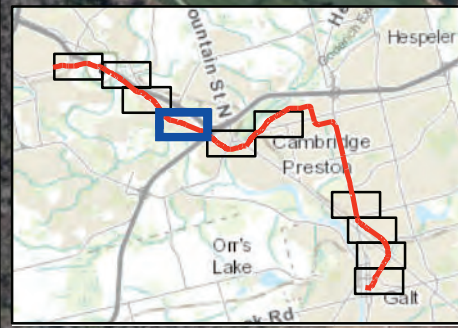
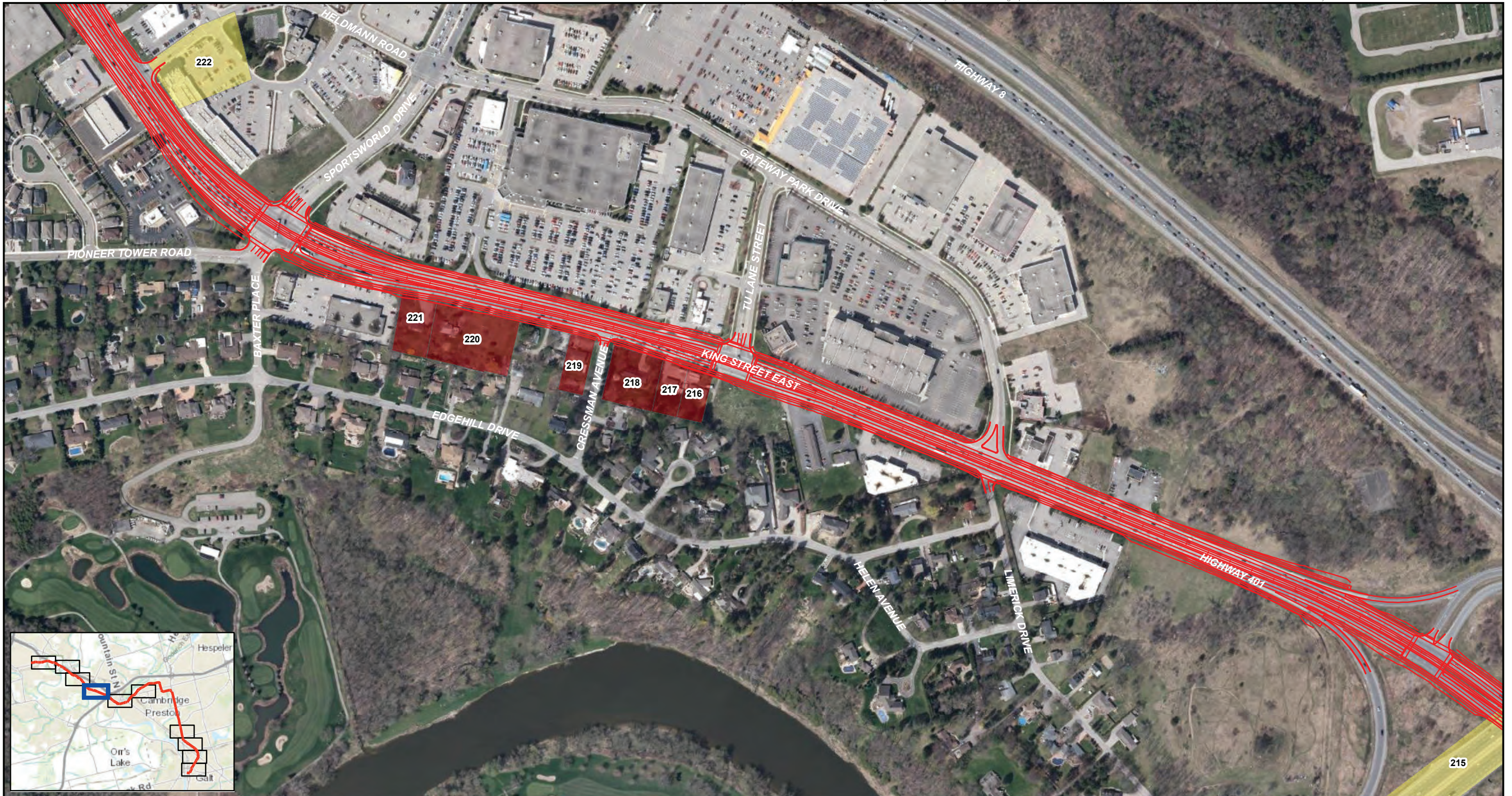


LEGEND

- Preliminary Design Plan Recommendation
- Heritage Documentation Report
- Post-TPAP CHER
- Post-TPAP CHER/HIA
- Post-TPAP HIA
- TPAP CHER

TITLE:	FIGURE 30: RECOMMENDATIONS		
SCALE:	1:4,000	PROJECT NO:	161-07859-01
		DATE:	AUGUST 2019
DRAWN BY:	AST	CLIENT:	REGION OF WATERLOO
PROJECT:	CULTURAL HERITAGE REPORT: EXISTING CONDITIONS AND PRELIMINARY IMPACT ASSESSMENT REPORT WATERLOO ION STAGE 2 TPAP		
	CREDITS:		
	LAND INFORMATION ONTARIO		



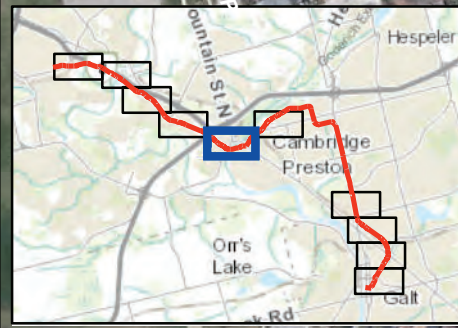


LEGEND

- Preliminary Design Plan **Recommendation**
- Heritage Documentation Report
- Post-TPAP CHER
- Post-TPAP CHER/HIA
- Post-TPAP HIA
- TPAP CHER

TITLE: FIGURE 31: RECOMMENDATIONS	SCALE: 1:4,000	PROJECT NO: 161-07859-01	DATE: AUGUST 2019
PROJECT: CULTURAL HERITAGE REPORT: EXISTING CONDITIONS AND PRELIMINARY IMPACT ASSESSMENT REPORT WATERLOO ION STAGE 2 TPAP	DRAWN BY: AST	CLIENT: REGION OF WATERLOO	
CREDITS: LAND INFORMATION ONTARIO			





LEGEND

- Preliminary Design Plan Recommendation
- ▨ Heritage Documentation Report
- ▨ Post-TPAP CHER
- ▨ Post-TPAP CHER/HIA
- ▨ Post-TPAP HIA
- ▨ TPAP CHER



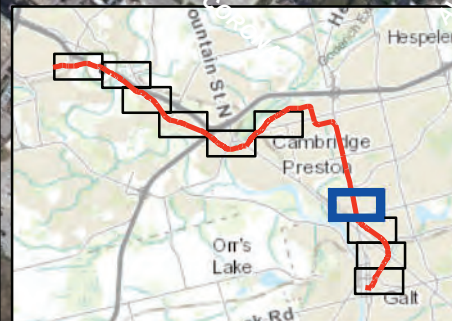
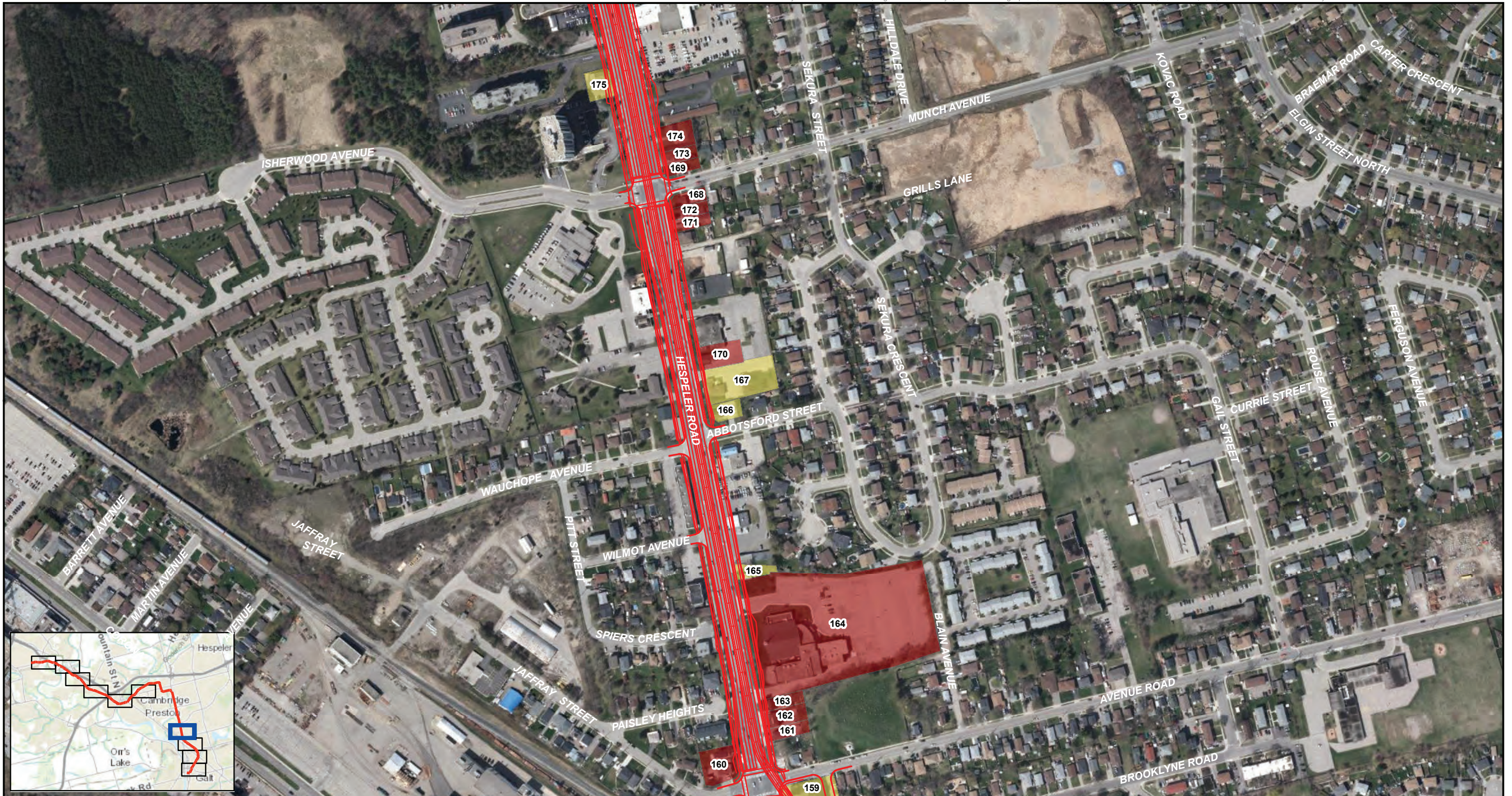
TITLE: FIGURE 32: RECOMMENDATIONS	SCALE: 1:4,000	PROJECT NO: 161-07859-01	DATE: AUGUST 2019
PROJECT: CULTURAL HERITAGE REPORT: EXISTING CONDITIONS AND PRELIMINARY IMPACT ASSESSMENT REPORT WATERLOO ION STAGE 2 TPAP	DRAWN BY: AST	CLIENT: REGION OF WATERLOO	CREDITS: LAND INFORMATION ONTARIO
<p>0 100 200 m</p>			



LEGEND

- Preliminary Design Plan Recommendation
- Heritage Documentation Report
- Post-TPAP CHER
- Post-TPAP CHER/HIA
- Post-TPAP HIA
- TPAP CHER

TITLE: FIGURE 33: RECOMMENDATIONS	SCALE: 1:4,000	PROJECT NO: 161-07859-01	DATE: AUGUST 2019
PROJECT: CULTURAL HERITAGE REPORT: EXISTING CONDITIONS AND PRELIMINARY IMPACT ASSESSMENT REPORT WATERLOO ION STAGE 2 TPAP	DRAWN BY: AST	CLIENT: REGION OF WATERLOO	CREDITS: LAND INFORMATION ONTARIO
<p>0 100 200 m</p>			



LEGEND

- Preliminary Design Plan Recommendation
- Heritage Documentation Report
- Post-TPAP CHER
- Post-TPAP CHER/HIA
- Post-TPAP HIA
- TPAP CHER



TITLE:
FIGURE 34: RECOMMENDATIONS

SCALE:
1:4,000

PROJECT NO:
161-07859-01

DATE:
AUGUST 2019

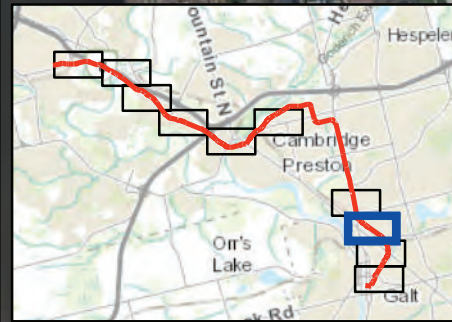
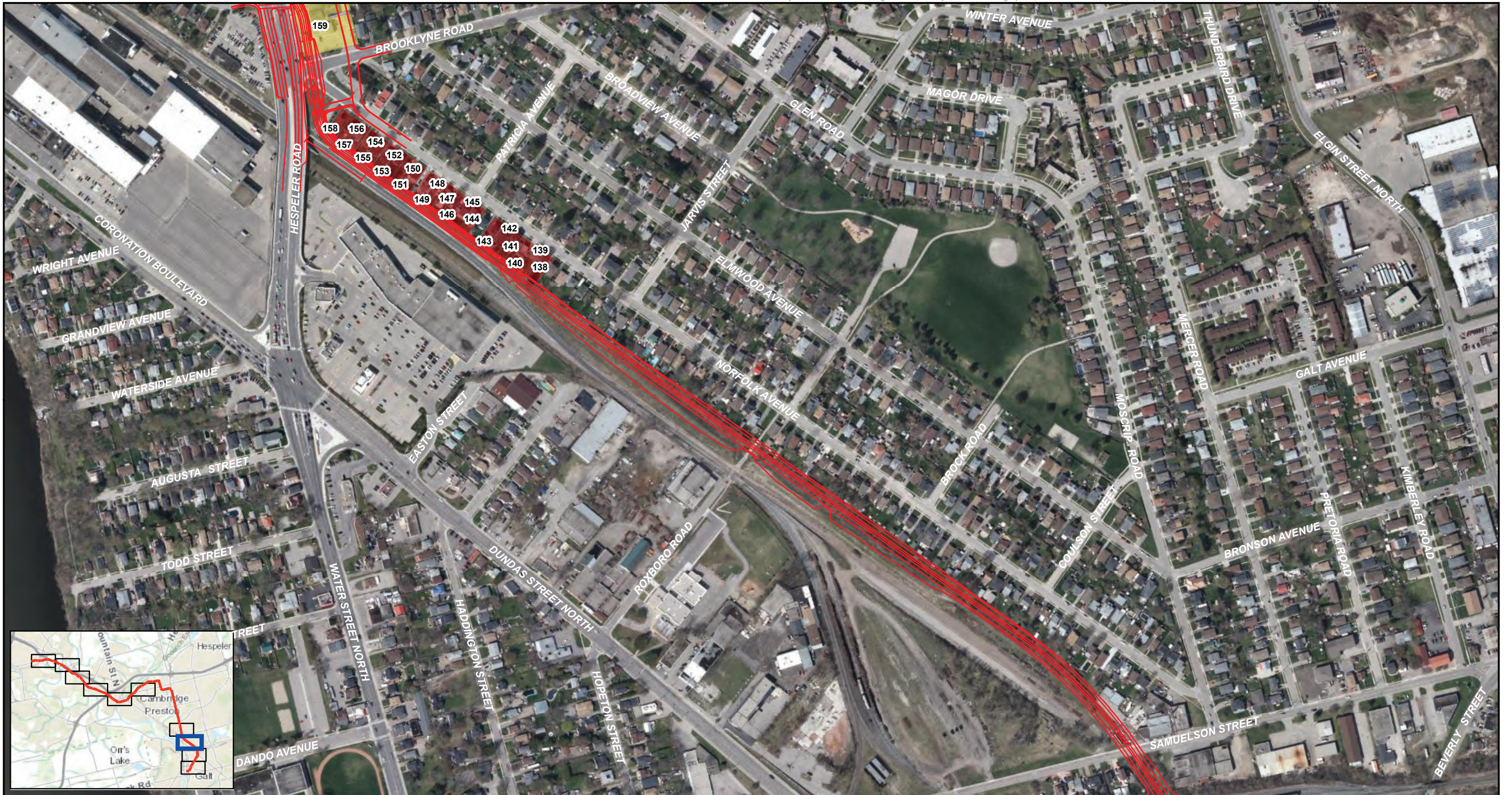
PROJECT:
CULTURAL HERITAGE REPORT: EXISTING
CONDITIONS AND PRELIMINARY IMPACT
ASSESSMENT REPORT WATERLOO ION STAGE 2 TPAP

DRAWN BY:
AST

CLIENT:
REGION OF WATERLOO



CREDITS:
LAND INFORMATION ONTARIO

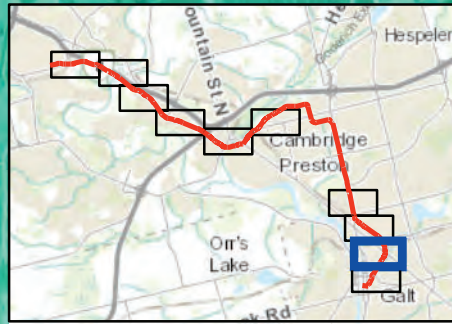
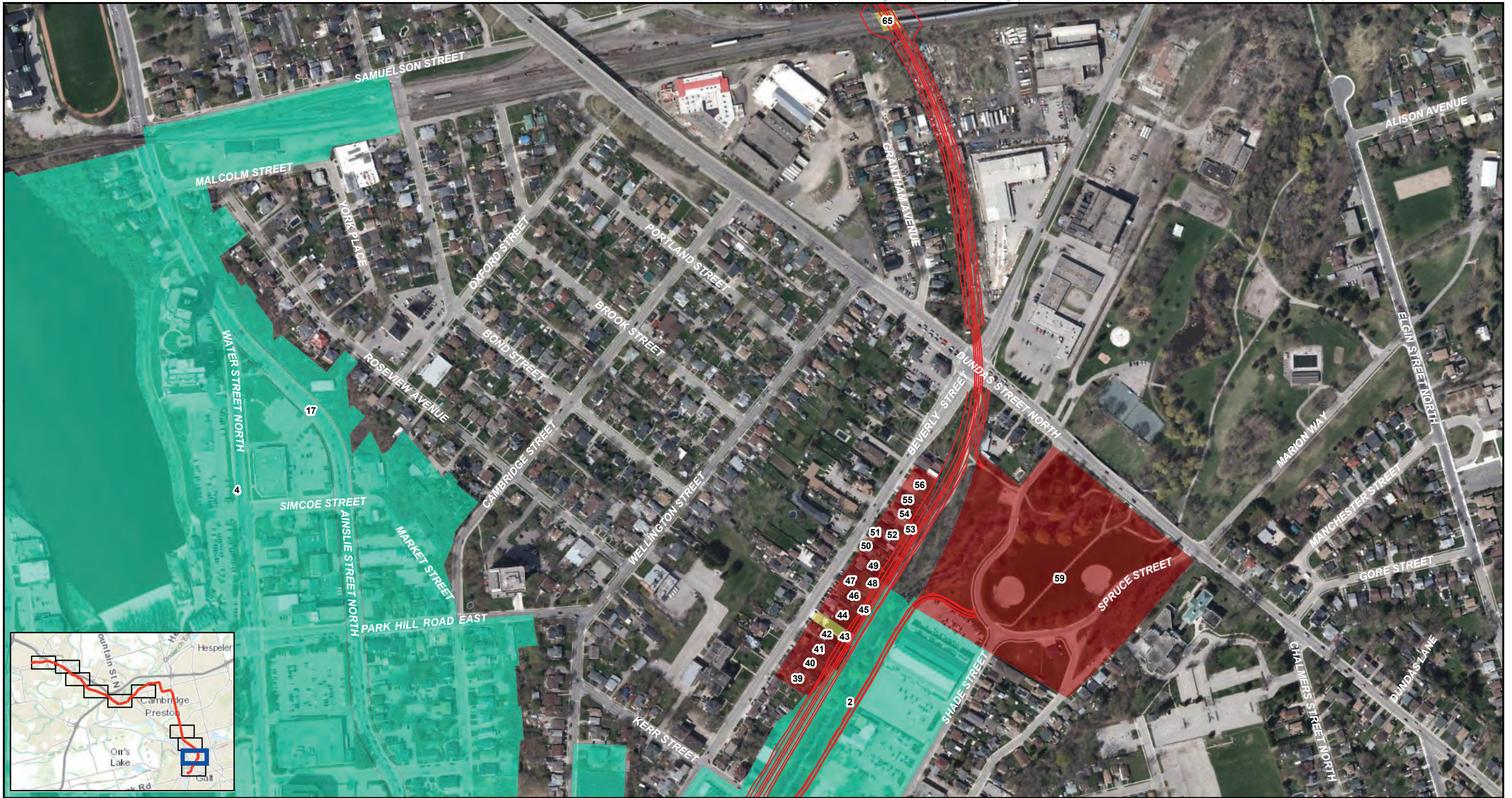


LEGEND

- Preliminary Design Plan Recommendation
- Heritage Documentation Report
- Post-TPAP CHER
- Post-TPAP CHER/HIA
- Post-TPAP HIA
- TPAP CHER



TITLE: FIGURE 35: RECOMMENDATIONS	SCALE: 1:4,000	PROJECT NO: 161-07859-01	DATE: AUGUST 2019
PROJECT: CULTURAL HERITAGE REPORT: EXISTING CONDITIONS AND PRELIMINARY IMPACT ASSESSMENT REPORT WATERLOO ION STAGE 2 TPAP	DRAWN BY: AST	CLIENT: REGION OF WATERLOO	CREDITS: LAND INFORMATION ONTARIO
<p>0 100 200 m</p>			



LEGEND

- Preliminary Design Plan Recommendation
- Heritage Documentation Report
- Post-TPAP CHER
- Post-TPAP CHER/HIA
- Post-TPAP HIA
- TPAP CHER



TITLE: FIGURE 36: RECOMMENDATIONS	SCALE: 1:4,000	PROJECT NO: 161-07859-01	DATE: AUGUST 2019
PROJECT: CULTURAL HERITAGE REPORT: EXISTING CONDITIONS AND PRELIMINARY IMPACT ASSESSMENT REPORT WATERLOO ION STAGE 2 TPAP	DRAWN BY: AST	CLIENT: REGION OF WATERLOO	CREDITS: LAND INFORMATION ONTARIO
<p>0 100 200 m</p>			

